

Women on the way up

THE WORLD superpowers of team chess, the USSR and Hungary, also battled it out in the women's Olympiad in Malta. After a neck and neck struggle the USSR clung to their half-point lead in the final round to make it a double success, having shortly before taken the men's Olympiad by the slenderest of margins.

Leading scores were: 1, USSR, 32½ points; 2, Hungary, 32; 3, Poland, 26½; 4, Rumania 26; 5-6, China, West Germany, 24 (42 countries competed). New Zealand were 27th equal on 20½ points.

In contrast to our men's result in Malta, the New Zealand women's team registered a highly commendable improvement on past performances. On top board 16-year-old Fenella Foster shows excellent potential, and could soon make a real impact internationally with the experience she is now gaining in Europe. Ann Flower, called in as reserve, put up a creditable performance on board four, while particularly notable was the dedication and hard work at the board of Darrell Brightwell, like Flower a newcomer internationally.

Captain and board two Winsome Stretch (the more chessically experienced sister of Brightwell) had a more fluctuating time but three good wins at the end helped boost the team to its position, a vast improvement on the 1976 and 1978 Olympiad results.

This week's game features a rare loss by a member of the victorious Soviet team.

cedes Hund a favourable Benoni-type set-up in which White has strong pressure down the e-file.

- 15. c4 Rac8
- 16. a4 h5
- 17. a5 Ng4
- 18. h3 Ne5
- 19. Bd2 e6
- 20. Bc3 e×d5
- 21. N×d5 Nc6!

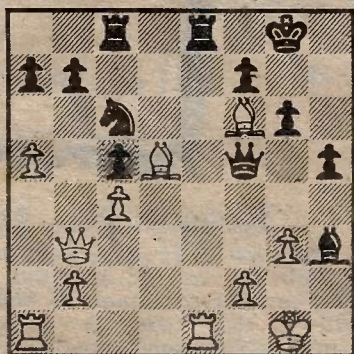
The best defence — Black wants to occupy the d4 square. Instead 21...B×h3 fails to 22.B×e5 B×g2 23.K×g2 R×e5 (23...B×e5 24.R×e5 R×e5 25.Nf6 ch wins the queen) 24. R×e5 B×e5 25.Re1! and wins material.

22. Nf6 ch

Forcing the exchange of Gaprindashvili's defensive black-squared bishop for a knight. After 22.B×g7 K×g7 23.Qc3 ch Black could hold with 23...Nd4.

- 22. ... B×f6
- 23. B×f6 B×h3
- 24. Bd5! Qf5

GAPRINDASHVILI



HUND

On 24...Be6 25.Qe3! Kh7 (preventing Qh6) 26.Q×c5 maintains White's advantage. Now, however, Hund finds a series of exchanges which should lead to the better endgame for her.

- 25. R×e8 ch R×e8
- 26. Q×b7 Q×f6
- 27. Q×c6 Qe7??

An horrific blunder, presumably in time-trouble, spoils the otherwise stern resistance from the Soviet Grandmaster. The endgame after 27...Q×c6 28.B×c6 is undoubtedly better for White because of Black's weak queen-side pawns (eg 28...Re2 29.b3 Rb2 30.Bu4 with penetration by Re1 or Rdl to follow) but Black can still fight on by 28...Rb8 29.Bb5 Kf8.

28. Q×g6 ch

J'adoube! Mercifully the remainder is brief.

- 28. ... Kf8
- 29. Q×h5 Be6
- 30. Qh8 mate

MURRAY CHANDLER

MODERN DEFENCE

- | | |
|----------------------------------|------------------------------------|
| B. HUND
(West Germany) | N. GAPRINDASHVILI
(USSR) |
| 1. e4 | g6 |
| 2. d4 | Bg7 |
| 3. Nc3 | c6 |
| 4. g3 | d5 |
| 5. Nge2 | d×e4 |
| 6. N×e4 | Bg4 |
| 7. Bg2 | Nbd7 |

Gaprindashvili evidently reasons it is too dangerous to accept the proffered pawn by 7...B×e2 8.Q×e2 Q×d4 because of White's lead in development after 8.0-0 with Rdl to follow.

- | | |
|------------|------|
| 8. c3 | Ngf6 |
| 9. N×f6 ch | N×f6 |
| 10. 0-0 | 0-0 |
| 11. Re1 | Qd7 |
| 12. Qb3 | Rfe8 |
| 13. Nf4 | Bf5 |
| 14. d5 | c5?! |

To be considered was 14...c×d5 15.N×d5 Be6 16.N×f6 ch B×f6 17.Q×b7 Q×h7 18.B×b7 Rab8 with compensation — White may have to return the pawn to get her pieces out.

Gaprindashvili's move, however, con-

NZ women's team, MALTA OLYMPIAD 1980

	France	Mexico	Scotland	Italy	Canada	Iceland	Puerto Rico	Ireland	Malta	Dominica	Colombia	Nigeria	US Virgin Is	UAE	Points	Played	Percentage
1. FOSTER	0	1	1	0	½	1	1	0	½	0	0	1	1	1	7	12	58.33
2. STRETCH	0	1	1	0	0	0	1	½	½	0	0	1	1	1	5	12	41.67
3. BRIGHTWELL	0	1	1	½	0	½	1	0	1	0	0	1	1	0	4	10	40.00
4. FLOWER	1	½	0	1	1	½	½	1	0	1	1	1	1	1	3½	7	50.00
TEAM TOTAL	0	2½	2	½	½	1	2½	½	2½	½	0	3	3	2	20½	42	48.8